

TECHNICAL RIDER 2021 – P.A. SYSTEM
© 2021 NOSPR
WWW.NOSPR.ORG.PL

**NOSPR TECHNICAL RIDER
BIG CONCERT HALL (BCH)**

Polish National Radio
Symphony Orchestra based in Katowice
Wojciech Kilar 1
40-202 Katowice, Poland

Adam Szymczyk
Head of Stage Service
e-mail: adam.sz@nospr.org.pl

About:

Seats: 1686+12 places for disabled people
in wheelchairs
Number of entrances for the public: 14
Stage area: 312m²

Big Concert Hall

P.A. System:

The Big Concert Hall (BCH) sound system consists of „D&B Audiotechnik” components in the configuration:

- main array (Q1 10x per one side)
- Additional array on 2th balcony (T10 4x per one side)
- out-fill (T10 2x5 per one side – sound system for side entresols above and behind the stage)
- back-fill (12s 6x – sound system for „choir” places) – warning! speakers are available depending on the need for visual projection
- front-fill (T10 5x on the edge of stage)
- subwoofers (J-SUB 2x)
- f/x speakers (8s 1x per one side)
- floor monitors (M4 8x)
- amplifiers D&B (D6, D12, D30)
- audio processor OUTLINE NEWTON 16+8 (at the FOH position)
- CABLANWT-ANL + CABLANWT-DGT (full set of cabling and connection strips for inputs and audio outputs)
- Cisco Switch SG300-10-K9-EU

The audio signals are distributed through the Stagetec NEXUS digital matrix.

Power terminals located in amplifiers at the stage and at +4 level are powered by AES/EBU signal. Microphone and line signals are supported

by NEXUS XMIC + preamps, with independent GAIN sensitivity control. The stage has 64 XLR-F sockets arranged in 7 connectors.

SOUND MIXER:

The Big Concert Hall of NPRSO is equipped with two Yamaha CL3 sound mixers. Tablets (iPad) with an controlling application of the operation of consoles are also available.

Each mixer supports 64 input channels and 24 mix buses and 8 matrix buses.

Possible configurations:

- one console: 1 pc FOH / MON (64 in / 24 mix / 8 matrix)
- two consoles: 1 pc FOH + 1pc MON (64 in / 24 mix / 8 matrix + 64 in / 24 mix / 8 matrix)

It is possible to attach 16 or 32 channel stage racks to each console. NPRSO is equipped with 3 Rio1608-D and Rio3224-D devices.

SIGNAL RECORDING:

It is possible to play or record 64 signals between a computer and a mixer via the DANTE protocol.

OTHER:

If necessary, Acoustic Solution company screens and mobile absorbing-dispersing acoustic partitions are available.

We have a Shure four-channel wireless in-ear monitor (IEM) system.

For communication between technicians a Riedel intercom system based on stationary desktops and wireless sets with a handset and a microphone are provided.

LIGHT:

The system – ART-NET

Sockets on stage 4xDMX 5-pin (one line Art-NET)
4xEthernet

Power around stage – 32A, 63A and 125A

Lighting console – Compulite Vector

Violet + external wing

Follow spots 4 x Robert Juliat Victor 8-22 1800W

HMI (we do not have our own operators!)



**USE OF ANY SMOKE GENERATORS
AND IGNITION MAGNETO ARE NOT ALLOWED!**

CONCERT HALL BACKSTAGE:

Backstage – 233 m2 semicircle shaped (smallest widths on 3.9m curves minus score shelf 0.8m). Max spacing of the entrance corridors on the backstage 3m when opening the door 2.75m

DRESSING ROOMS:

- 3 soloists dressing rooms on the ground floor
- 3 rehearsal rooms (adapted for ensemble) on the 3rd floor
- 5 soloists dressing rooms on the 3rd floor

BACK-END (technical) PARKING:

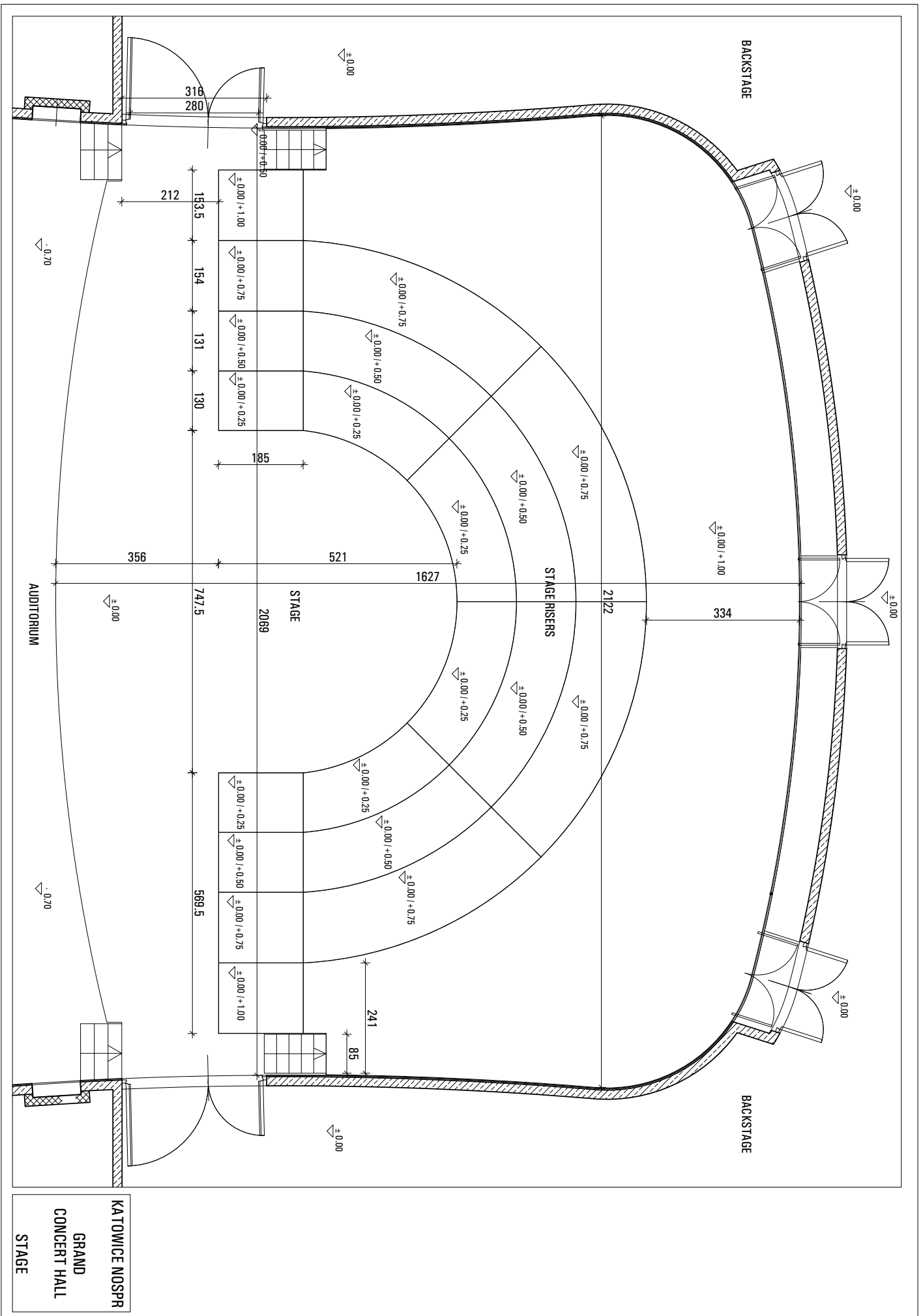
- Courtyard size: 30m x 29m
- Car max height: 4.2 m
- Two three-phase power supply points:
32A and 125A
- First board next to the gatehouse
- Second board on the wall next to the loading lock

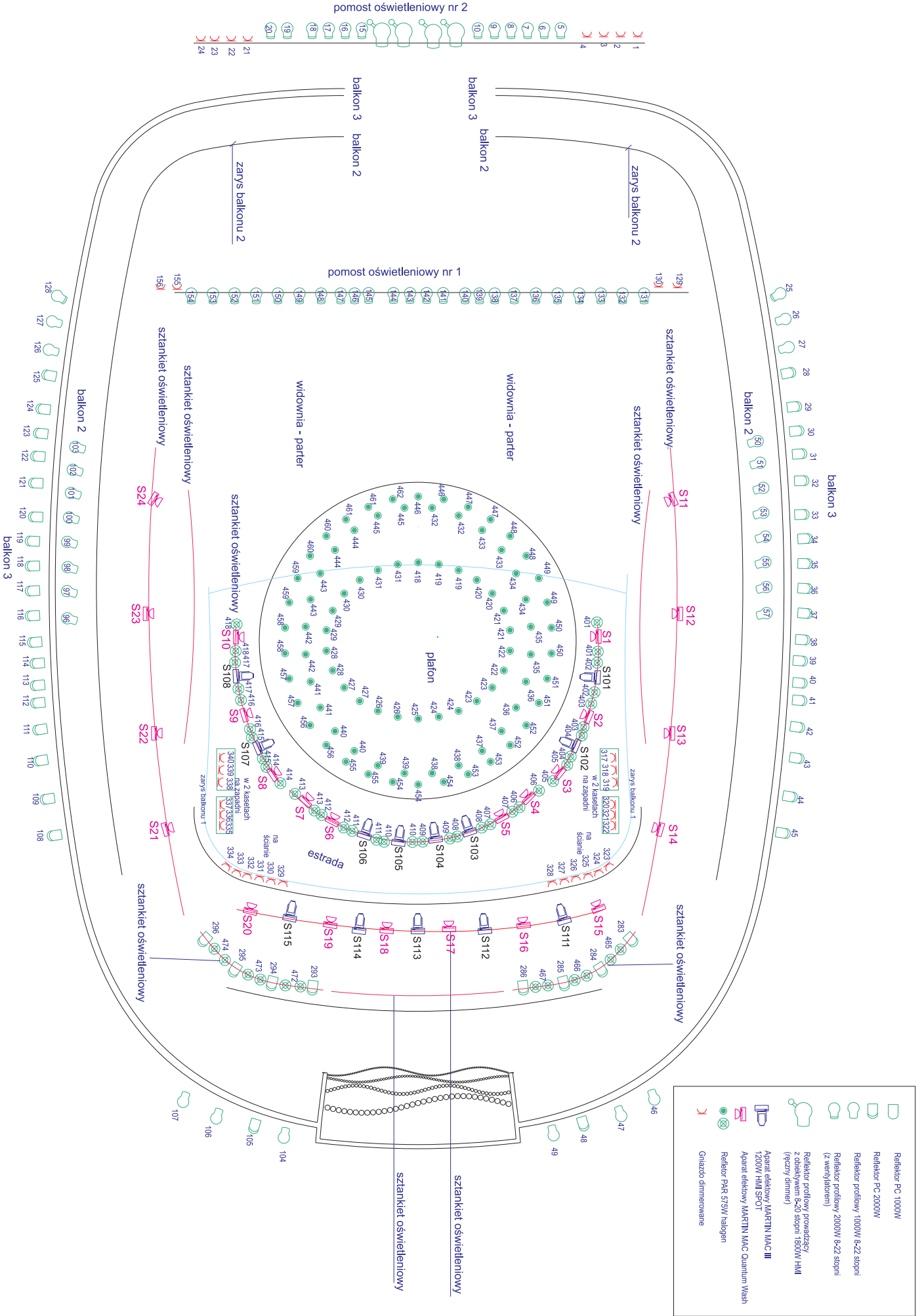
ELEVATOR:

Loading elevator size: 3.05 m x 2.45m

INTERNET:

In the public and backstage areas of concert halls WI-FI is available.





pomost oświetleniowy nr 2

pomost oświetleniowy nr 1

- Reflektor PC 1000W
- Reflektor PC 2000W
- Reflektor profilowy 1000W 8x22 stopni
- Reflektor profilowy 2000W 8x22 stopni (z wentylatorem)
- Reflektor profilowy, przemienny z obiektywem 8x20 stopni 1800W HMI (czerny dimmer)
- Aparat efektowy MARTINI MAC III 1200W HMI SPOT
- Aparat efektowy MARTINI MAC Quantum Wash
- Reflektor PAR 575W halogen
- Gniazdo dimmerowane