

TECHNICAL RIDER 2021 – P.A. SYSTEM
© 2021 NOSPR
WWW.NOSPR.ORG.PL

NOSPR TECHNICAL RIDER
CHAMBER HALL (CH)

Polish National Radio
Symphony Orchestra based in Katowice
Wojciech Kilar 1
40-202 Katowice, Poland

Adam Szymczyk
Head of Stage Service
e-mail: adam.sz@nospr.org.pl

About:

Seats: 283
Number of entrances for the public: 2
Stage area: 91m²

CHAMBER HALL

P.A. SYSTEM:

The Chamber Sound System (SK) consists of “D&B Audiotechnik” components in the configuration:

- main array (Q1 5x per side)
- front fill (8s 4x)
- subwoofers (J-SUB 2x)
- F/X speakers (8s 1x per one side)
- floor monitors (M4 6x)
- amplifiers D&B (D6, D12)

The audio signals are distributed through the Stagetec NEXUS digital matrix. Power terminals located in amplifiers at the stage and at +4 level are powered by AES/EBU signal.

Microphone and line signals are supported by NEXUS XMIC + preamps, with independent GAIN sensitivity control.

The stage has 32 XLR-F sockets arranged in 3 connectors.

SOUND MIXER:

The Chamber Hall is equipped with a Yamaha CL3 sound mixer. Tablets (iPad) with an controlling application of the console’s operation are also available.

The mixer has the option of attaching 16 or 32 channel stage racks (RiO).

SIGNAL RECORDING:

It is also possible to play or record 64 signals between a computer and a mixer via the DANTE protocol.

OTHER:

If necessary, Acoustic Solution company screens and mobile absorbing-dispersing acoustic partitions are available.

We have a Shure four-channel wireless in-ear monitor (IEM) system.

For communication between technicians a Riedel intercom system based on stationary desktops and wireless sets with a handset and a microphone are provided.

LIGHT:

The system – ART-NET

Lighting console – Compulite Vector Violet + external wing

Sockets on stage 2xDMX 5-pin

2xEthernet

Power around stage – 32A

Follow spots 4 x Robert Juliat Victor 8-22 1800W HMI (we do not have our own operators!)



**USE OF ANY SMOKE GENERATORS AND
IGNITION MAGNETOS ARE NOT ALLOWED!**

CHAMBER HALL BACKSTAGE:

Max spacing of the entrance corridors on the backstage 3m when opening the door 2.75m.

DRESSING ROOMS:

- 3 soloists dressing rooms on the ground floor
 - 3 rehearsal rooms (adapted for ensemble) on the 3rd floor
 - 5 soloists dressing rooms on the 3rd floor
-

BACK-END (technical) PARKING:

Courtyard size: 30m x 29m

Car max height: 4.2m

Two three-phase power supply points: 32A and 125A

- First board next to the doorman entrance
 - Second board on the wall next to the loading lock
-

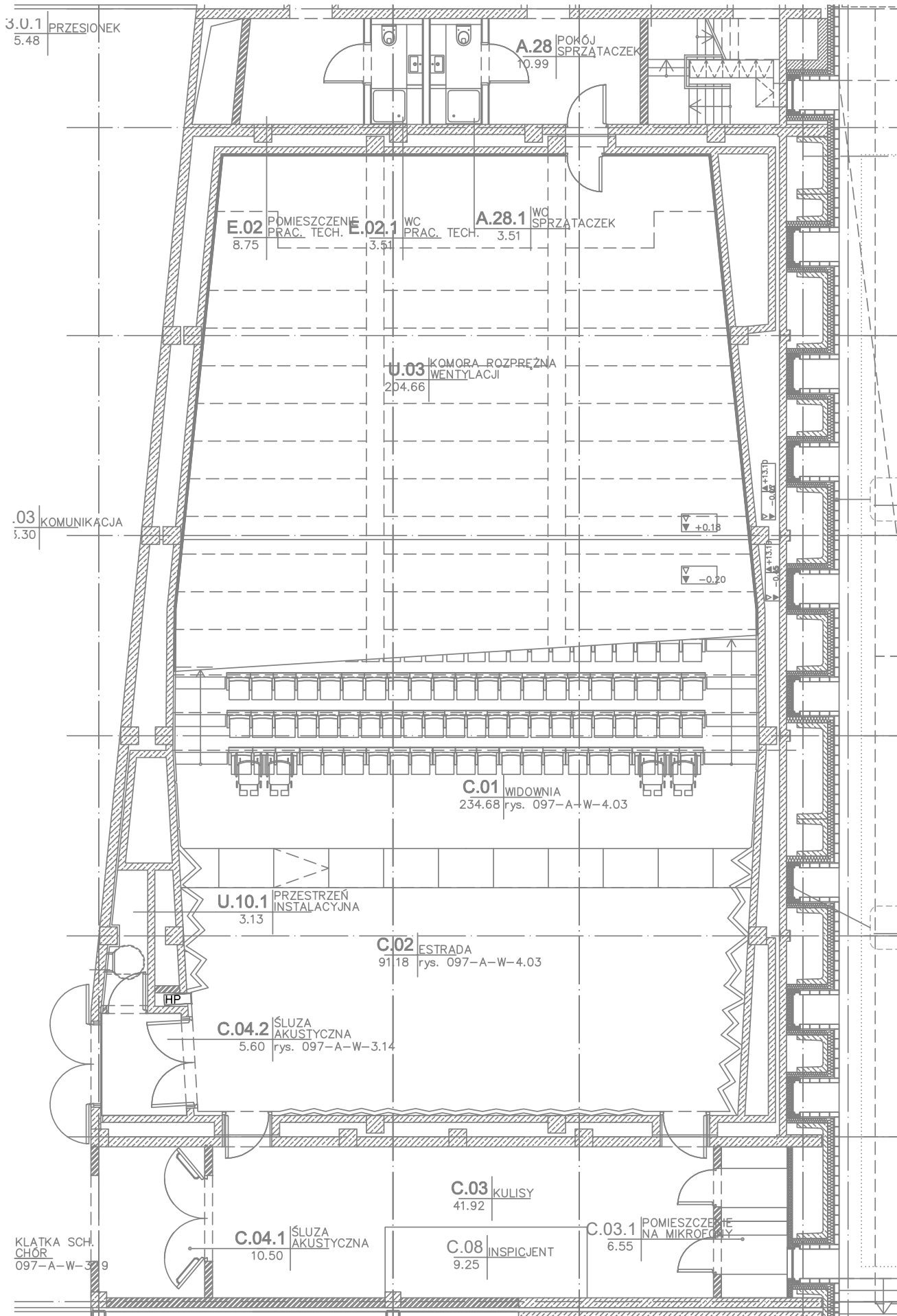
ELEVATOR:

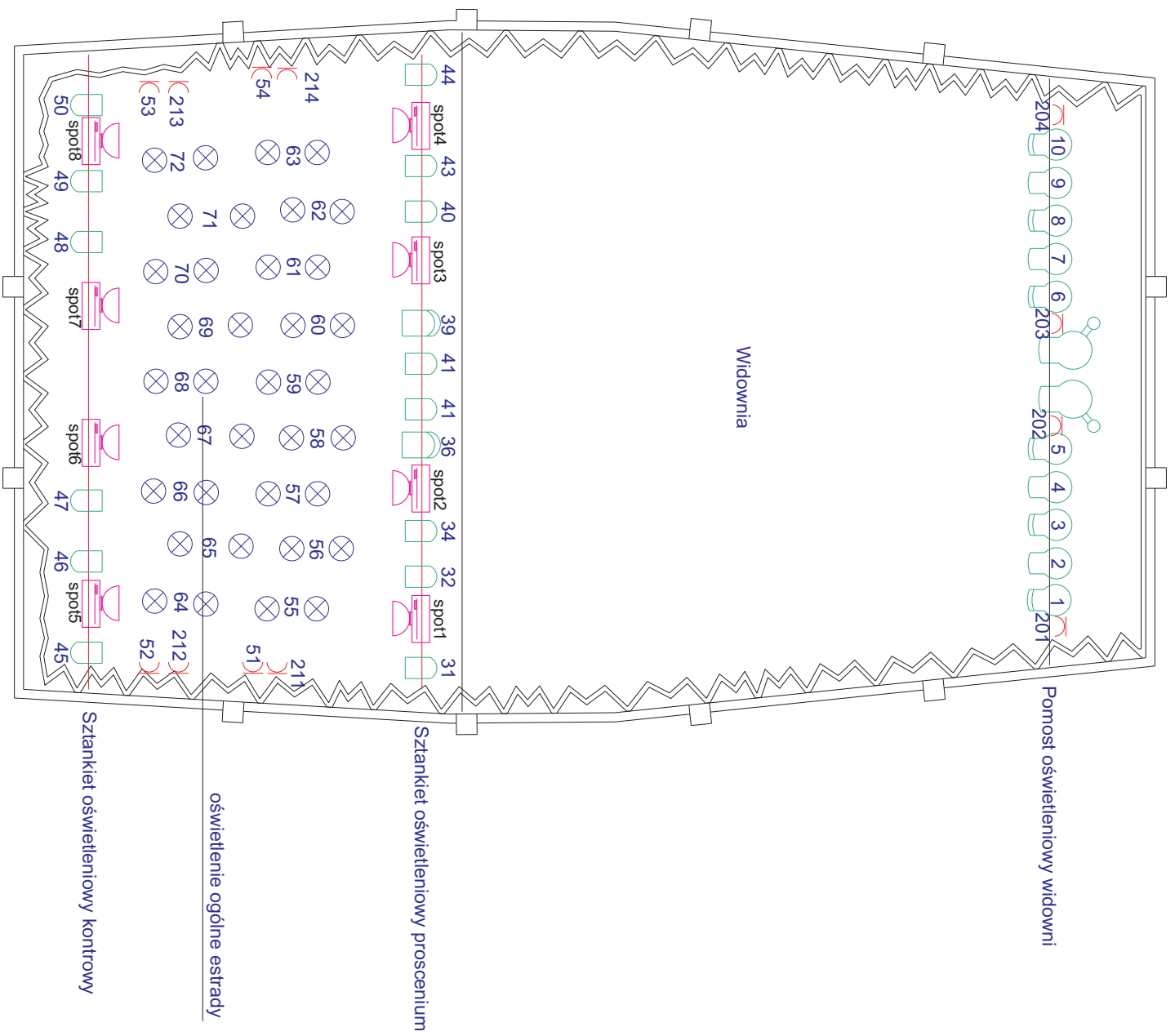
Loading elevator size: 3.05m x 2.45m

INTERNET:

In the public and backstage parts of concert halls WI-FI is available.

NOSPR TECHNICAL RIDER / www.nospr.org.pl





OZNACZENIA:

 Reflektor PC 1000W

 Reflektor PC 2000W

 Reflektor PAR 750W


 Reflektor profilowy 1000W 8-22 stopni

 Reflektor profilowy 2000W 8-22 stopni

 Reflektor profilowy prowadzący 1200W 8-22 stopni

 Gniazdo (obwody regulowane i nieregulowane)

 Aparat efektowy MARTIN MAC Quantum Wash

 Spot 1: AN0.3 adr 1

Spot 2: AN0.3 adr 34

Spot 3: AN0.3 adr 67

Spot 4: AN0.3 adr 100

Spot 5: AN0.3 adr 133

Spot 6: AN0.3 adr 166

Spot 7: AN0.3 adr 199

Spot 8: AN0.3 adr 232